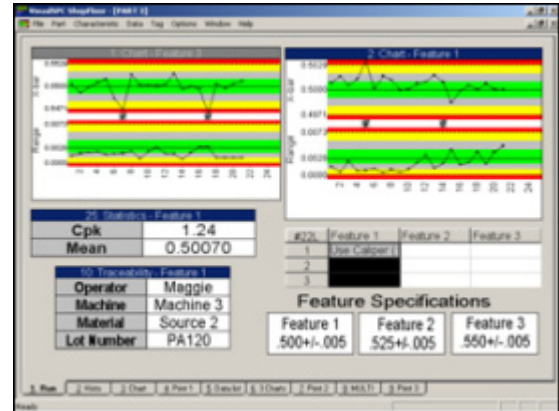


Proficiency Shop Floor SPC Fundamentals

Course Description

The **Proficiency Shop Floor SPC** course is a comprehensive, hands-on training session that will guide students through the building, customizing and reporting of the Proficiency Shop Floor SPC suite.



Who Should Attend?

This course is designed for Lead Operators and Application Administrators.

Are There Any Prerequisites?

Participants should have basic PC literacy and a working knowledge of Windows operating systems.

What Tasks Will Be Taught in This Class?

Upon completion of this Course, the student will be able to:

- Create and configure a new Proficiency Shop Floor SPC part document.
- Customize data collection and reporting screens.
- Create and configure printable reports.
- Configure gage documents.
- Program Flash Cables.
- Understand architecture communication between critical Proficiency Shop Floor SPC components.

Course Length

3 days

Suggested Class Size

10 students

Class Hours

8:00 am - 5:00 pm, daily



Course Agenda

(Schedule and content may vary.)

Day 1

Morning

Shop Floor Managers and Tools

Database Manager	Configuration Manager
MSDE Manager	Security Manager
Data Migration	Part Manager

Shop Floor Editors

Trace Editor	Nonconforming Editor
Event Editor	Database Editor
Alarm Editor	

Afternoon

Data Collection

Discuss the Menus for Shop Floor, the Part Wizard for creating new parts, as well as Workbooks and the use of Designer.

Day 2

Morning

Part File Migration and the Property Editor

Familiarize student with migration part files into the database and the use of the property editor to change the part setup.

Creating Part Files

Familiarize student with the creation of part files (All Types) and customizing them.

Afternoon

Creating Part Files

Familiarize student with the creation of part files (All Types) and customizing them.

Day 3

Morning

Gage Documents, RS-232 Gaging & Measure Systems Analyst (MSA)

Familiarize student with the Gage Documents, RS-232 gage and programming Flash Cables. The Use of the MSA Option

Visual SPC Analyst & Reports

Familiarize student with Analyst and how to perform database queries and standard reports.

Audit Reports & Login Notification

Familiarize student with Audit Reporting and the Login Notification Tool.

Afternoon

Importer & OPC Association Editor and OPC Importer

Cover the purpose of Importer Designer and Importing. Familiarize student with the ability of the OPC Association editor and OPC Importer

Monitor

Familiarize student with the use of the Monitor Module.

Q & A

